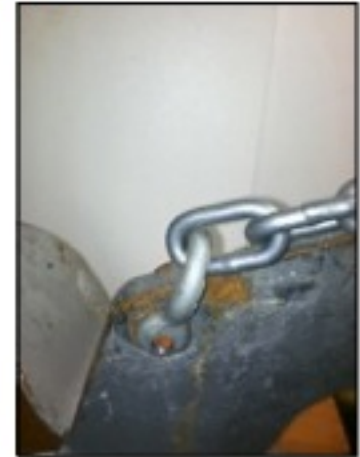




Original anchor Saver Installation Revised 12/2011

Attach your chain and Shackle to the Crown eye hole.



Slip Anchor Saver Shackle through the shank eye hole. Use Stainless Steel wire tie provided to slip around the anchor shackle arm. This prevents you from losing your shackle after a break a way). **(Do not over tighten wire tie.)**

Secure Release Bar to Shackle using Bronze shear bolt provided. **Do not over tighten lock nut as release bar**



IMPORTANT:

First, holding the Chain taught, select, usually, the second full mid link from the end of shank. You will know this is correct if the shackle arm is floating in the shank eye when the chain is pulled in the anchor position. Tighten the steel bolt.

Notice the shackle arm is floating when pulling tight on the chain. This insures there is no pressure on the shear bolt when the boat is at anchor.



Anchor Saver llc.
239-249-1603

