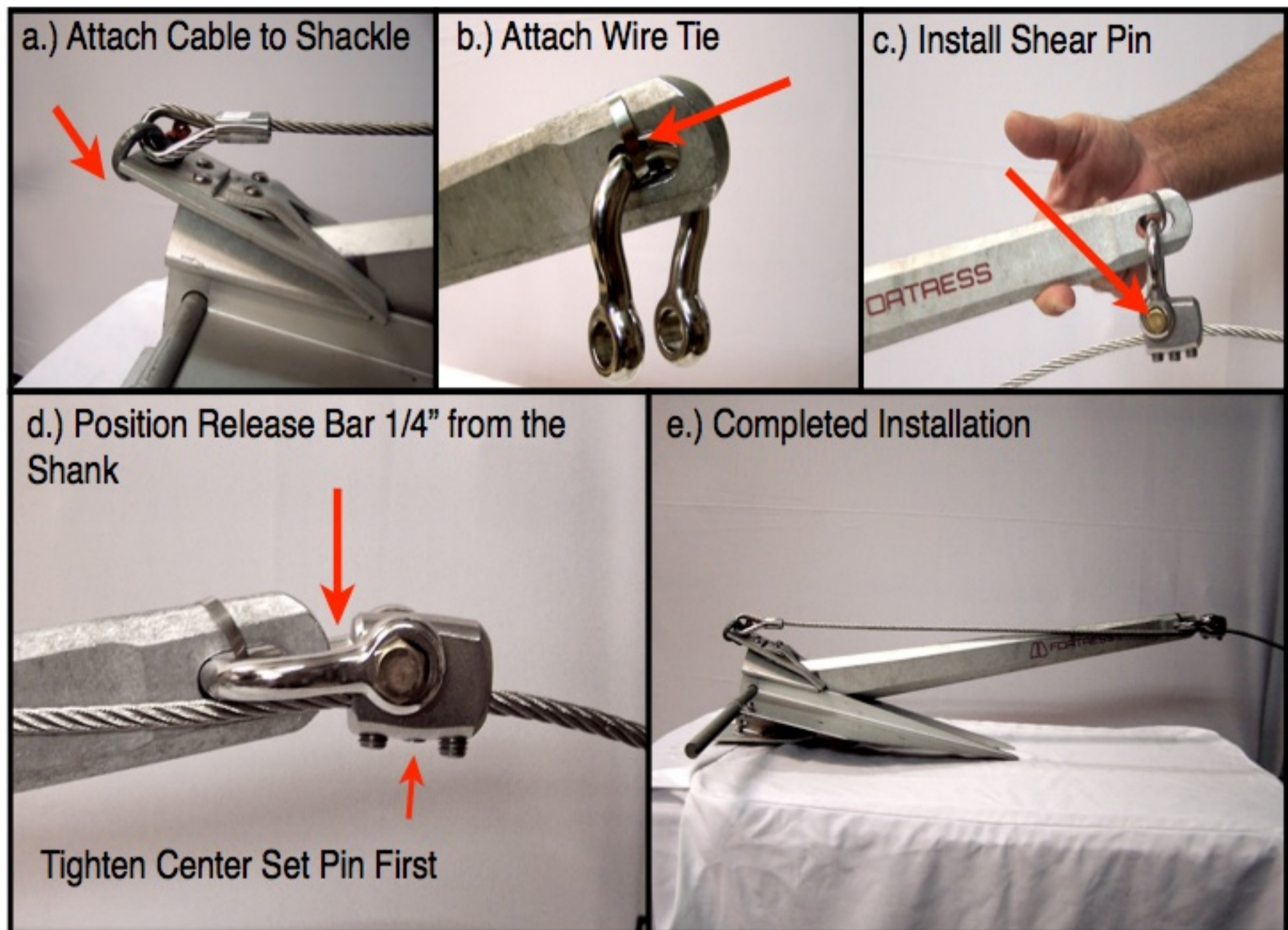


## Fluke Type Installation



**a.) Attach Crown Eye loop of cable (labeled) to Shackle Arm.**

**b.) Slip Shackle into Shank Eye and attach the Stainless Steel Wire Tie, using pliers to pull the Wire Tie tight enough around arm of Shackle and Shank Eye, to prevent Shackle from falling off, Shackle should move freely.**

**c.) With Shackle BELOW the Anchor Shank, slip Release Bar up into the Shackle. Insert the Release Pin through the Shackle and Release Bar. Secure Release Pin with a Lock Nut. DO NOT OVER TIGHTEN RELEASE PIN, as over torquing can break the Release Pin (Release Bar needs to swivel freely).**

**d.) WHILE HOLDING CABLE TIGHT, position Release Bar 1/4" away from the Anchor Shank. Using Allen Wrench provided, TIGHTEN CENTER SET PIN FIRST, then tighten the other two pins. Set pins must be hand tightened AS HARD AS YOU CAN.**

**e.) Anchor Saver installation is now complete!**