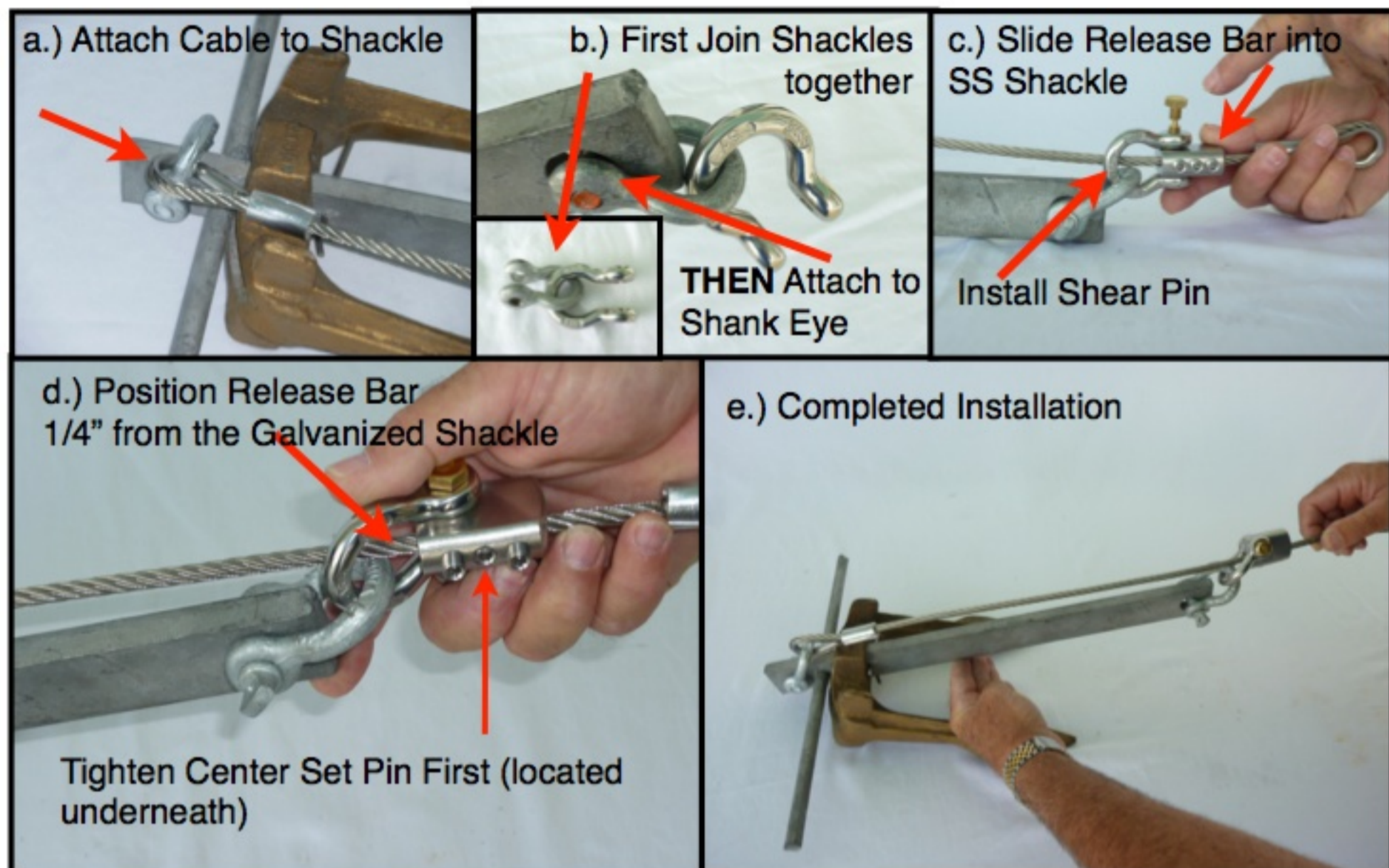


Sea Claw Type Installation



- a.) **Attach your Shackle through the Crown Eye loop of the Cable (marked).**
- b.) **Join the Galvanized Shackle and the Stainless Steel Anchor Saver Shackle together. Then attach the Galvanized Shackle to the Shank Eye of the Anchor.**
- c.) **While holding the Anchor Saver Shackle above the Anchor Shank, slip Release Bar into the Stainless Steel Anchor Saver Shackle as shown (sideways). Insert the Release Pin through the Shackle and Release Bar. Secure Release Pin with a Lock Nut. DO NOT OVER TIGHTEN RELEASE PIN, as over torquing can break the Release Pin (Release Bar needs to swivel freely).**
- d.) **While holding cable tight in RAISED POSITION (as shown in the completed picture e.), position Release Bar 1/4" away from the end of the Galvanized Shackle. Using Allen Wrench provided, TIGHTEN CENTER SET PIN FIRST, then tighten the other two pins (located on the underside of the Release Bar. Set pins must be hand tightened as hard as possible.**
- e.) **Anchor Saver installation is now complete!**